

NICOLA JOHNSTONE – PROGRAM LEADER MARINE STRATEGY IMPLEMENTATION


## NSW Marine Estate Management Strategy

Connecting the coast, catchment and community

NTS19103110 [www.marine.nsw.gov.au](http://www.marine.nsw.gov.au)




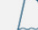








## Our marine estate

- waters of the NSW coast
- extends from Queensland to Victorian borders
- from high tide mark out to 3 nautical miles offshore
- includes shoreline, submerged lands, tidal rivers, creeks, coastal lakes and estuaries




[www.marine.nsw.gov.au](http://www.marine.nsw.gov.au)

## Our marine estate

 1,750 km of coastline	 6,225 vessel visits to NSW ports annually
 6,500 km of estuarine foreshores	 850,000 licensed recreational fishers
 1,000,000 hectares of estuary and ocean	 1.8 million recreational boating
 11 coastal Aboriginal nations	 6.3 million people live along the coast
 6 marine parks	 \$90 million wild caught commercial fisheries
 12 aquatic reserves	 \$6.5 billion trade & tourism

[www.marine.nsw.gov.au](http://www.marine.nsw.gov.au)



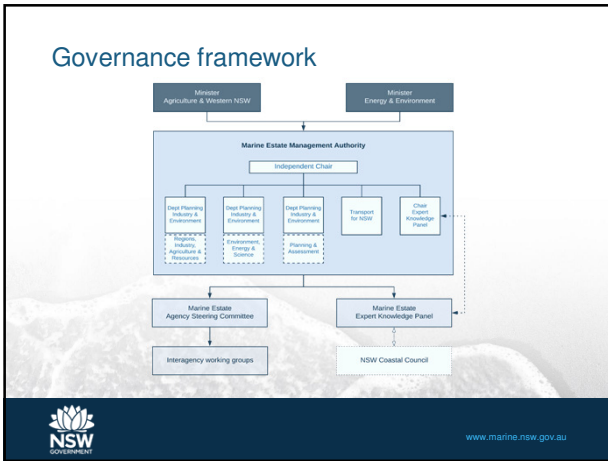
## Marine Estate Management Act 2014

The act:

- sets the purpose and content of the ten year Strategy
- sets the overarching strategy for coordinated management of the marine estate
- states the vision for the marine estate
- outlines priorities for management.

Ministers and public authorities are to have regard to the Strategy to the extent that it is relevant to the exercise of their functions.

[www.marine.nsw.gov.au](http://www.marine.nsw.gov.au)



### Why we need a strategy?

marine estate's condition is poor & under growing threat  
overuse, over development, user conflicts and lack of coordinated management

<p><b>75%</b> central region estuaries in <b>poor health</b></p>	<p><b>Increase in ocean acidification</b></p>
<p><b>70%</b> migratory shorebird populations have <b>declined</b></p>	<p><b>pollution major threat</b> to marine ecosystems</p>
<p><b>2.15 million</b> extra people along the NSW coast by 2036</p>	<p>marine estate <b>health in decline</b></p>

The NSW Government logo and website URL (www.marine.nsw.gov.au) are at the bottom.

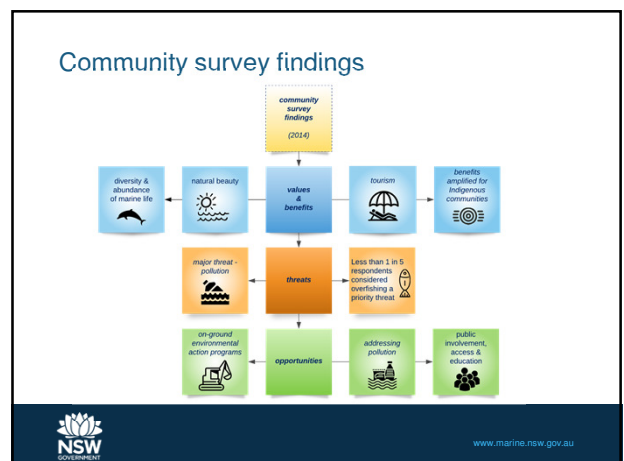


TABLE 1: National priority threats to ENVIRONMENTAL assets		LEGEND		TABLE 2: Statewide priority threats to SOCIAL, CULTURAL & ECONOMIC benefits		LEGEND	
Threat	Priority	High threat	Low threat	Threat	Priority	High threat	Low threat
1. Other freshwater discharge	High	High	Low	1. Local air quality environmental degradation	High	High	Low
2. Excess nutrient discharges	High	High	Low	2. Local air quality environmental degradation	High	High	Low
3. Agricultural effluent discharges	High	High	Low	3. Local air quality environmental degradation	High	High	Low
4. Chemical, waste or sediment discharges	High	High	Low	4. Local air quality environmental degradation	High	High	Low
5. Discharge of oil or fuel	High	High	Low	5. Local air quality environmental degradation	High	High	Low
6. Discharge of plastic litter	High	High	Low	6. Local air quality environmental degradation	High	High	Low
7. Freshwater development	High	High	Low	7. Local air quality environmental degradation	High	High	Low
8. Freshwater extraction & damming	High	High	Low	8. Local air quality environmental degradation	High	High	Low
9. Freshwater extraction & damming	High	High	Low	9. Local air quality environmental degradation	High	High	Low
10. Freshwater extraction & damming	High	High	Low	10. Local air quality environmental degradation	High	High	Low
11. Freshwater extraction & damming	High	High	Low	11. Local air quality environmental degradation	High	High	Low
12. Freshwater extraction & damming	High	High	Low	12. Local air quality environmental degradation	High	High	Low
13. Freshwater extraction & damming	High	High	Low	13. Local air quality environmental degradation	High	High	Low
14. Freshwater extraction & damming	High	High	Low	14. Local air quality environmental degradation	High	High	Low
15. Freshwater extraction & damming	High	High	Low	15. Local air quality environmental degradation	High	High	Low
16. Freshwater extraction & damming	High	High	Low	16. Local air quality environmental degradation	High	High	Low
17. Freshwater extraction & damming	High	High	Low	17. Local air quality environmental degradation	High	High	Low
18. Freshwater extraction & damming	High	High	Low	18. Local air quality environmental degradation	High	High	Low
19. Freshwater extraction & damming	High	High	Low	19. Local air quality environmental degradation	High	High	Low
20. Freshwater extraction & damming	High	High	Low	20. Local air quality environmental degradation	High	High	Low
21. Freshwater extraction & damming	High	High	Low	21. Local air quality environmental degradation	High	High	Low
22. Freshwater extraction & damming	High	High	Low	22. Local air quality environmental degradation	High	High	Low
23. Freshwater extraction & damming	High	High	Low	23. Local air quality environmental degradation	High	High	Low
24. Freshwater extraction & damming	High	High	Low	24. Local air quality environmental degradation	High	High	Low
25. Freshwater extraction & damming	High	High	Low	25. Local air quality environmental degradation	High	High	Low
26. Freshwater extraction & damming	High	High	Low	26. Local air quality environmental degradation	High	High	Low
27. Freshwater extraction & damming	High	High	Low	27. Local air quality environmental degradation	High	High	Low
28. Freshwater extraction & damming	High	High	Low	28. Local air quality environmental degradation	High	High	Low
29. Freshwater extraction & damming	High	High	Low	29. Local air quality environmental degradation	High	High	Low
30. Freshwater extraction & damming	High	High	Low	30. Local air quality environmental degradation	High	High	Low

### Marine estate management strategy

- ten year Strategy announced 16 August 2018
- \$45.7 million allocated for Stage 1 ending mid 2020
- Stage 1 Implementation Plan developed
- 9 initiatives, 42 (of 53) actions underway
- collaboration across MEMA agencies and partners
- monitoring and evaluation framework developed
- linked with other reforms – key link with coastal management programs

www.marine.nsw.gov.au



### Marine Estate Management Strategy initiatives

- Initiative 1 Improving water quality and reducing litter
- Initiative 2 Delivering healthy coastal habitats with sustainable use & knowledge
- Initiative 3 Planning for climate change
- Initiative 4 Protecting the Aboriginal cultural values of the marine estate
- Initiative 5 Reducing impacts on threatened and protected species
- Initiative 6 Ensuring sustainable fishing and aquaculture
- Initiative 7 Enabling safe and sustainable boating
- Initiative 8 Enhancing social, cultural and economic benefits
- Initiative 9 Delivering effective governance

www.marine.nsw.gov.au

### Marine Estate Management Strategy - Stage 1 Implementation in local government areas

NSW Government logo

**Outcomes and highlights – Stage 1**

[www.marine.nsw.gov.au](http://www.marine.nsw.gov.au)

### Highlights – Aboriginal cultural values

Initiative 4 (DPI)

- **Traditional bark canoe project**  
- completed for 40 men & boys
- **Cultural education program**  
- 60+ school students
- **Aboriginal rangers employed**  
- for nesting shorebird monitoring & protection project
- **Weed management & herbicide training**
- **Vessel & boat licensing / deckhand training**  
- 90+ completed






[www.marine.nsw.gov.au](http://www.marine.nsw.gov.au)

### Highlights – marine wildlife

Initiative 5 (DPIE - EES)

- **Marine wildlife response training**  
- delivered specialised veterinary training and staff preparedness training to improve response to entanglements and other marine wildlife events
- **Seal interaction plan (& signage)**  
- for land managers
- **Whale entanglement**  
- engaged with the fishing industry to examine how fishing gear modification might reduce large whale entanglements
- **Wildlife observer program** (estuary general fishery)
  - 202 observed fishing days, 6000 trap lifts
  - 2,500 wildlife observation periods
  - pilot on sonar technology for detecting ghost traps







[www.marine.nsw.gov.au](http://www.marine.nsw.gov.au)

### Highlights – fishing and aquaculture

Initiative 6 (DPI)

**Harvest strategy development**

- Workshop May 2019
- Progress development of NSW harvest strategy policy
- Evaluate ecological risks

**Supporting seafood futures**

- \$500,000 1<sup>st</sup> round announced April 2019
- \$500,000 2<sup>nd</sup> round closed 30 August 2019
- Build marketing and promotion capability of seafood businesses

**Master fisherman training** 6 workshops, 40+ graduates

- **Responsible and sustainable fishing:**  
- bycatch reduction, animal welfare, threatened species management, marine pests, habitat and pollution management





[www.marine.nsw.gov.au](http://www.marine.nsw.gov.au)

## Highlights – boating

### Initiative 7 (TfNSW)

- **Boating Infrastructure program**  
- more than 160 projects delivered and more underway
- **Maritime infrastructure program**  
- published
- **Boating education officer program**  
- delivered
- **Audit of navigational aids**  
- mapping & identification
- **Domestic commercial vessel inspections**  
- 900+ inspections for safety & environmental standards
- **Seagrass information**  
- in boat driver licence handbook - reviewed
- **Audit of current moorings**  
- completed – increase in compliance



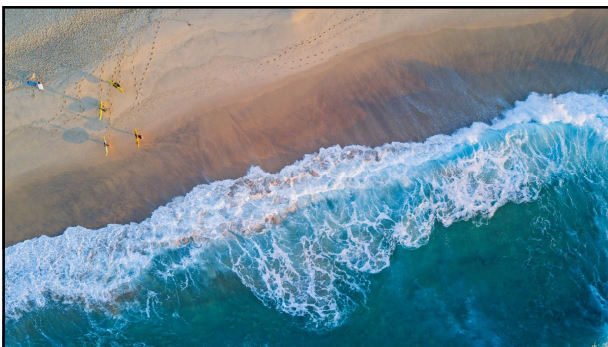
[www.marine.nsw.gov.au](http://www.marine.nsw.gov.au)

## Additional projects – progress

- **Marine estate education strategy**  
• statewide application
- **Coastal and marine activity mapping**  
• understand human use patterns and improve planning into the future
- **Richmond river pilot**  
• governance of five catchment councils
- **Climate change monitoring**  
• range of estuarine and offshore monitoring to inform adaptive management
- **Estuary strategies**  
• foreshore structures  
• bank protection  
• vegetation management.



[www.marine.nsw.gov.au](http://www.marine.nsw.gov.au)



Images

DPI: Stephen Ward, Tim Glasby, Nicola Johnstone, Jennifer Grant  
© iStock.com: a\_i\_Yoshi, RugIG, Darren Tierney, marshalgonz, RyanJLane, KristianBell, PeopleImages, champifozzy@gmail, jostinp, Jackshardy icons by: fulton.com ©



[www.marine.nsw.gov.au](http://www.marine.nsw.gov.au)